



NOVEMBER 2024 END OF MONTH FINANCIAL REPORTS

Page 2 – EOM Sustaining Membership and Revenue Charts and Graphs

Page 4 – EOM Financial Summary Reports

Page 6 – Statement of Activities – Actual to Budget

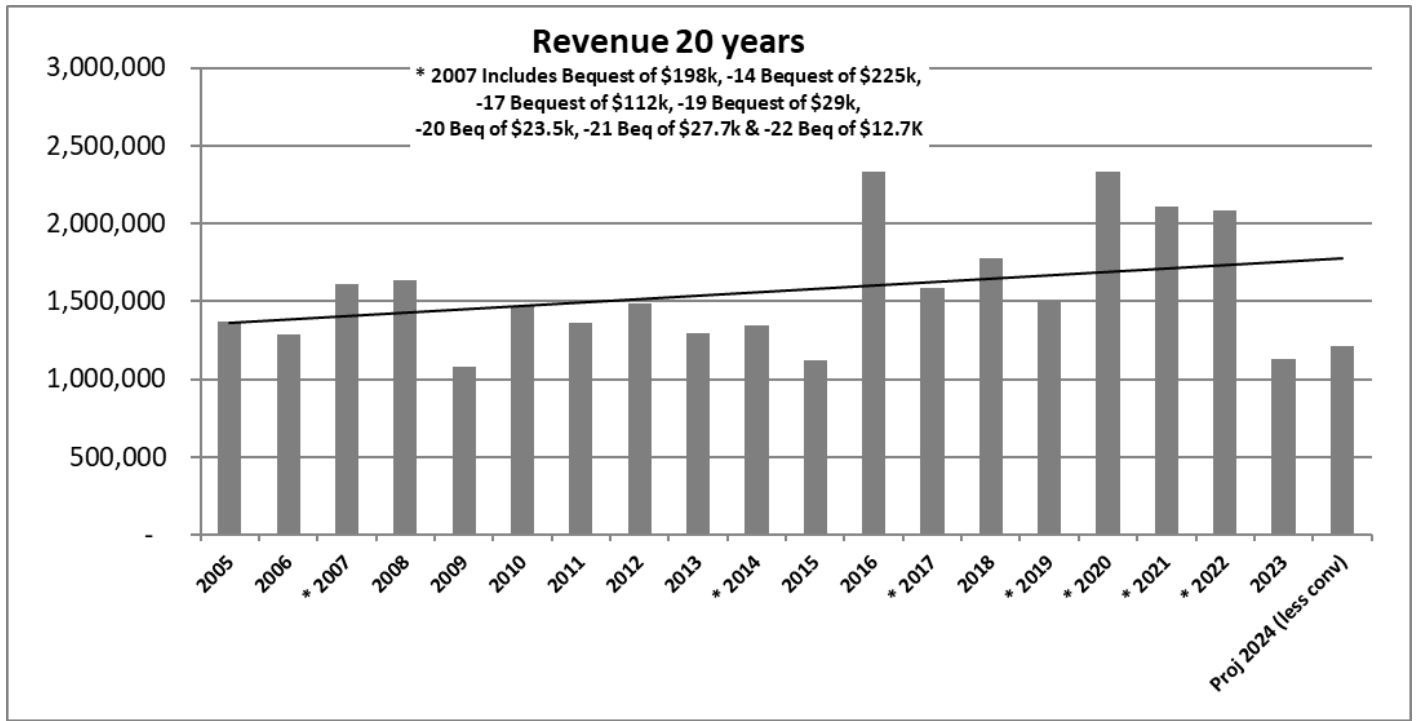
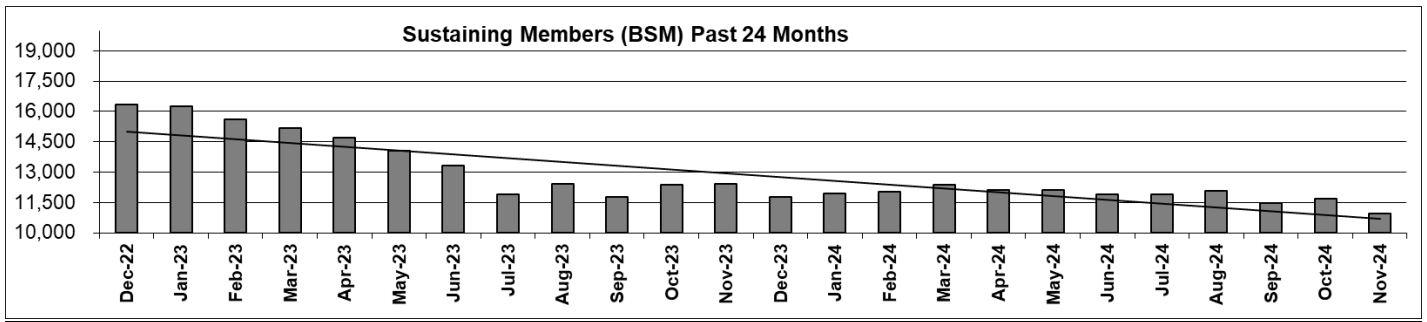
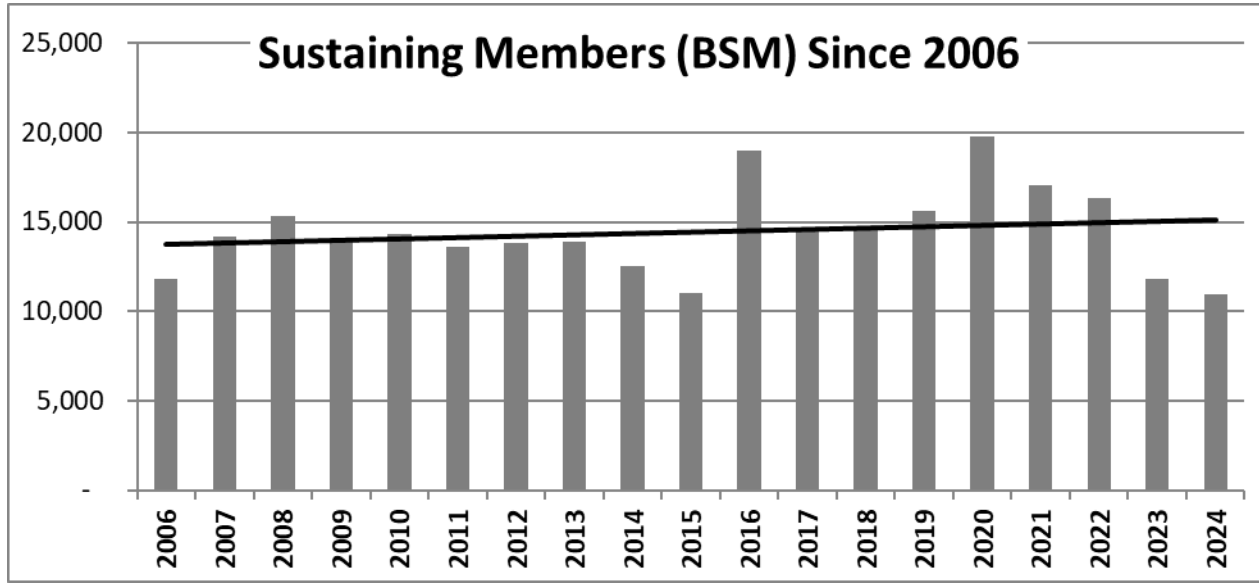
Page 9 – Statement of Financial Position Curr v. Prior Month Comparison

Page 11 – Statement of Cash Flows

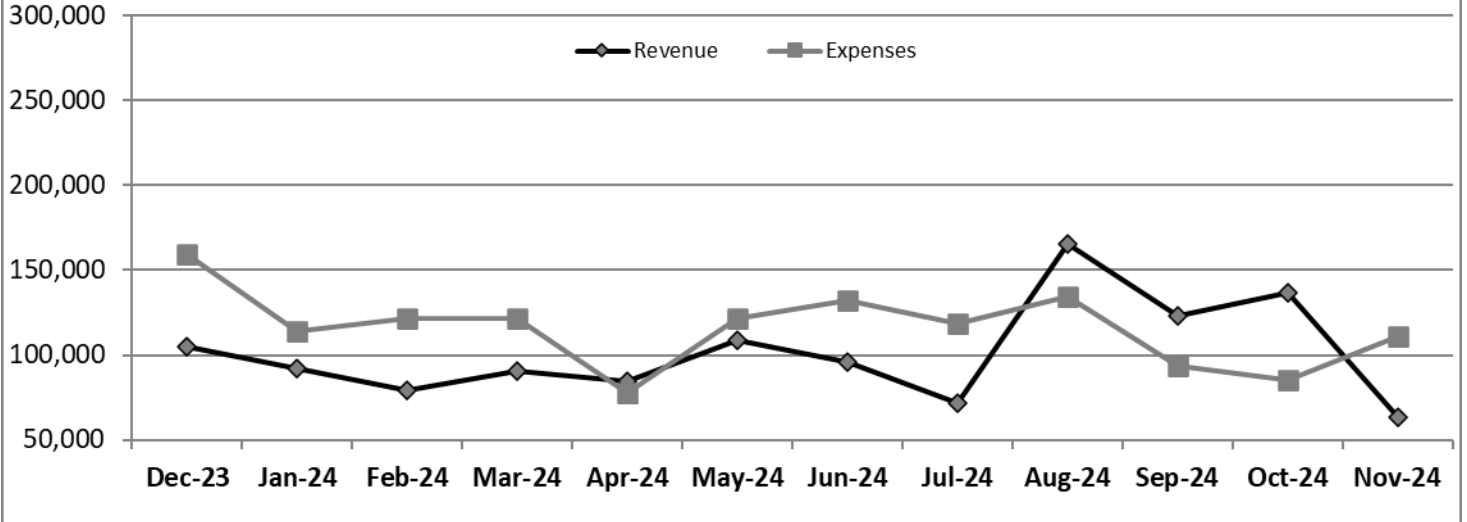
Page 12 – Related Party Transactions – *Updated through 12/19/2024*

Page 12 – Chair’s Discretionary Disbursements

End of Month Reports – Charts

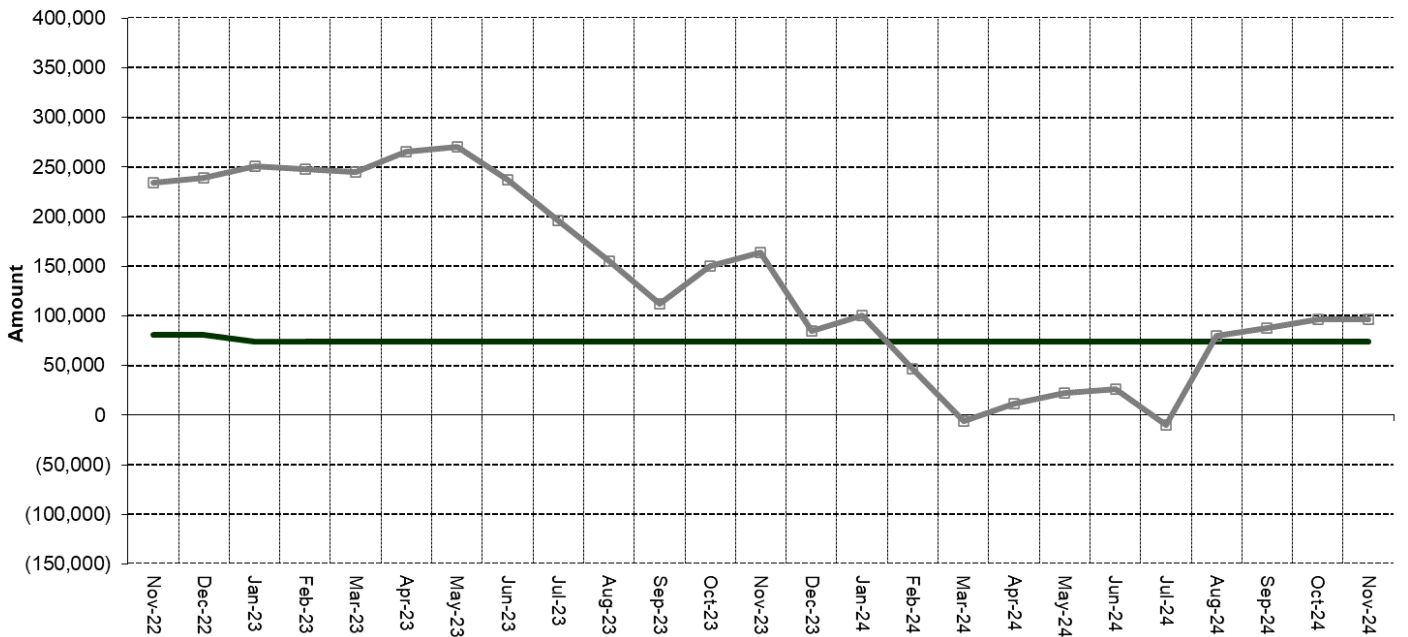


Monthly Revenue and Expenses - Past 12 Months - * Non Convention



Reserve Adequacy Trend (24 Months)

2024 Monthly Resv Target = \$74,120 - Curr Month Resv = \$96,278 *excludes TK JFA



		JAN	FEB	MAR	APR	MAY	JUN	JUL	AUG	SEP	OCT	NOV
	Total Cash	\$ 280,324	\$ 249,686	\$ 210,481	\$ 244,701	\$ 524,438	\$ 358,200	\$ 341,198	\$ 406,181	\$ 114,290	\$ 134,321	\$168,937
Minus	Temporary Restricted	\$ 1,730	\$ 1,730	\$ 1,730	\$ 1,730	\$ 154,224	\$ 1,730	\$ 1,730	\$ 1,730	\$ 1,730	\$ 1,730	\$ 1,730
Minus	Total Deferred Liabilities	\$ 111,807	\$ 127,916	\$ 171,286	\$ 233,641	\$ 2,435	\$ 2,677	\$ 2,515	\$ 2,682	\$ 2,615	\$ 2,308	\$ 1,864
Minus	Accounts Payable	\$ 9,281	\$ 9,358	\$ 10,611	\$ 4,257	\$ 1,783	\$ 4,024	\$ 5,464	\$ 14,355	\$ 8,915	\$ 4,266	\$ 9,906
Minus	Credit Card Balance	\$ 1,242	\$ 2,877	\$ 2,234	\$ 15,213	\$ 42,510	\$ 16,629	\$ 29,815	\$ 17,452	\$ 62,437	\$ 73,210	\$ 90,630
Minus	Accrued Expenses & Liabilities	\$ 79,846	\$ 74,674	\$ 47,575	\$ 40,907	\$ 312,819	\$ 319,270	\$ 323,244	\$ 312,643	\$ 24,967	\$ 29,214	\$ 29,575
Plus	Prepaid Expenses	\$ 9,137	\$ 4,597	\$ 5,950	\$ 55,998	\$ 5,398	\$ 5,902	\$ 3,597	\$ 15,041	\$ 65,623	\$ 64,789	\$ 52,942
Plus	Accrued Vacation	\$ 15,004	\$ 9,129	\$ 11,168	\$ 6,629	\$ 6,629	\$ 6,629	\$ 7,961	\$ 7,908	\$ 8,273	\$ 8,508	\$ 8,104
	Total Cash Reserve Adequacy	\$ 100,558	\$ 46,856	\$ (5,837)	\$ 11,579	\$ 22,693	\$ 26,400	\$ (10,012)	\$ 80,269	\$ 87,520	\$ 96,889	\$ 96,278

End of Month Reports – Financial Summary

Revenue - by Function as % of Total

2019 thru 2024 (Not Including Convention Packages)

	2019	2020	2021	2022	2023	2024
Membership Revenue	622,486	879,035	700,830	618,573	369,390	230,971
% Total Non Conv Revenue	41%	42%	33%	36%	33%	21%
General Fundraising	648,038	843,565	1,050,462	969,607	733,173	641,536
% Total Non Conv Revenue	43%	40%	50%	57%	65%	58%
Project/Program/Other	230,807	363,056	357,632	120,567	28,887	239,690
% Total Non Conv Revenue	15%	17%	17%	7%	3%	22%
Total Non Convention Revenue	1,501,331	2,085,656	2,108,924	1,708,747	1,131,450	1,112,197

P&L Acct Summary Last Month Plus YTD

January through December 2024

	Jan 24	Feb 24	Mar 24	Apr 24	May 24	Jun 24	Jul 24	Aug 24	Sep 24	Oct 24	Nov 24	TOTAL
Revenue												
4-4000 · Fundraising Membership Prog Rev	91,358	78,568	90,397	80,206	107,680	94,831	71,444	68,854	56,328	97,360	47,043	884,069
4-4100 · Restricted Project Revenue	340	335	268	4,416	804	419	415	25		50	170	7,244
4-4200 · Convention & Special Event Rev												0
4200 - 49999 · Events, Program, Other												0
4700 Other Receipts	90	79	79	88	85	77	90	83	160	75	68	975
4800 Misc Income								96,800	66,190	39,309	16,245	218,544
Services												0
Credit Card Rewards						761			605			1,366
Total Revenue	91,788	78,982	90,744	84,710	108,570	96,088	71,949	165,762	123,283	136,794	63,527	1,112,197
Expense												
7-7000 · Fundraising Membership Prog Exp	42,341	45,638	39,855	25,678	58,847	73,186	53,130	49,030	40,570	25,361	24,501	478,138
8000 · Salary & Related Expense	41,450	37,018	42,613	28,130	28,477	32,226	31,775	32,283	31,474	31,979	29,802	367,227
8100 · Admin & Overhead Expense	9,567	14,301	21,324	10,488	19,031	11,218	17,083	22,333	10,752	11,224	29,729	177,050
8200 · Professional Services	18,619	23,018	15,725	11,797	13,187	13,849	14,939	28,984	9,287	14,759	25,246	189,410
8300 · Depreciation Expense	1,846	1,846	1,846	1,846	1,846	1,846	1,846	1,846	1,846	1,846	1,846	20,305
Total Expense	113,823	121,823	121,363	77,939	121,388	132,325	118,773	134,475	93,929	85,168	111,124	1,232,130
Net Operating Income	(22,035)	(42,840)	(30,619)	6,771	(12,818)	(36,236)	(46,824)	31,286	29,354	51,626	(47,597)	(119,933)
Released from Restriction												0
Net Income	(22,035)	(42,840)	(30,619)	6,771	(12,818)	(36,236)	(46,824)	31,286	29,354	51,626	(47,597)	(119,933)

P&L Acct Summary Last Month Plus YTD (CONVENTION RESTRICTED)

January through December 2024

	Jan 24	Feb 24	Mar 24	Apr 24	May 24	Jun 24	Jul 24	Aug 24	Sep 24	Oct 24	Nov 24	TOTAL
Revenue												
Convention & Special Event Rev					568,590		11,807					580,398
Total Revenue	0	0	0	0	568,590	0	11,807	0	0	0	0	580,398
Expense												
Events and Conventions Exp			2,989	608	413,999	85,522	(2,784)	(47,000)	(8,859)			444,476
Total Expense	0	0	2,989	608	413,999	85,522	(2,784)	(47,000)	(8,859)	0	0	444,476
Net Operating Income	0	0	(2,989)	(608)	154,591	(85,522)	14,591	47,000	8,859	0	0	135,922
Net Income	0	0	(2,989)	(608)	154,591	(85,522)	14,591	47,000	8,859	0	0	135,922

Libertarian National Committee Inc

Balance Sheet Summary As of November 30, 2024

	TOTAL
↳ ASSETS	
↳ Current Assets	
Bank Accounts	214,189.43
Accounts Receivable	51,610.86
Other Current Assets	56,789.59
Total Current Assets	\$322,589.88
Fixed Assets	737,101.63
Other Assets	0.00
TOTAL ASSETS	\$1,059,691.51
↳ LIABILITIES AND EQUITY	
↳ Liabilities	
↳ Current Liabilities	
Accounts Payable	38,667.11
Credit Cards	90,629.70
Other Current Liabilities	51,233.53
Total Current Liabilities	\$180,530.34
Long-Term Liabilities	0.00
Total Liabilities	\$180,530.34
Equity	879,161.17
TOTAL LIABILITIES AND EQUITY	\$1,059,691.51

Libertarian National Committee Inc
Statement of Activities: Actuals vs Budget
January - November, 2024

	Nov 2024			Total		
	Actual	Budget	over Budget	Actual	Budget	over Budget
Income						
4-4000 Fundraising Membership Prog Rev		-	-	-	-	-
4000.10 Recurring Monthly Revenue		47,000	(47,000)	217,523	463,000	(245,477)
4000.20 Other Membership Revenue	1,915	20,000	(18,085)	230,971	220,000	10,971
4000.30 General Fundraising Revenue	44,948	60,000	(15,052)	395,606	599,000	(203,394)
4000.40 Ballot Access - Voter Reg Rev	109	-	109	28,408	70,000	(41,592)
4000.50 Campaign Candidate Support Rev	72		72	9,435	-	9,435
4000.60 Affiliate Support Revenue			-	1,208	-	1,208
4000.70 Historic Preservation Revenue		200	(200)	919	2,200	(1,281)
Total 4-4000 Fundraising Membership Prog Rev	47,043	127,200	(80,157)	884,069	1,354,200	(470,131)
4-4100 Restricted Project Revenue			-	-	-	-
4100.10 Building Fund Revenue			-	1,185	-	1,185
4100.20 Legal Fund Revenue	170		170	6,059	-	6,059
Total 4-4100 Restricted Project Revenue	170	-	170	7,244	-	7,244
4-4200 Convention & Special Event Rev			-	-	-	-
4200.10 Convention Packages Revenue		-	-	11,807	355,000	(343,193)
4200.20 Convention Fundraising Revenue		-	-	568,590	145,000	423,590
Total 4-4200 Convention & Special Event Rev	-	-	-	580,398	500,000	80,398
4700 Other Receipts			-	-	-	-
4710 Interest & Dividends	68		68	896	-	896
4720 Miscellaneous Receipts			-	79	-	79
Total 4700 Other Receipts	68	-	68	975	-	975
4800 Misc Income			-	-	-	-
4810 Building Rental Income - Nolan			-	4,500	-	4,500
4820 JFA Commissions	16,245		16,245	214,044	-	214,044
Total 4800 Misc Income	16,245	-	16,245	218,544	-	218,544
Credit Card Rewards			-	1,366	-	1,366
Total Income	63,527	127,200	(63,673)	1,692,595	1,854,200	(161,605)
Gross Profit	63,527	127,200	(63,673)	1,692,595	1,854,200	(161,605)

Libertarian National Committee Inc
Statement of Activities: Actuals vs Budget
January - November, 2024

	Nov 2024			Total		
	Actual	Budget	over Budget	Actual	Budget	over Budget
Expenses						
7-7000 Fundraising Membership Prog Exp			-	-	-	-
7000.10 Recurring Monthly Expense		1,000	(1,000)	-	11,000	(11,000)
7000.20 Other Membership Expense	2,280	1,000	1,280	27,641	11,000	16,641
7000.30 General Fundraising Expense	10,158	18,000	(7,842)	143,619	208,000	(64,381)
7000.40 Ballot Access Fundraising Exp		5,000	(5,000)	5,671	55,000	(49,329)
7000.50 Building Fundraising Expense			-	679	-	679
7000.60 Credit Card Fees Expense	3,198	5,000	(1,802)	53,540	55,000	(1,460)
7000.70 Store Expenses	1,547		1,547	32,418	-	32,418
7000.80 Core Services Expense			-	-	-	-
7000.81 Outreach & Activism Expense	3,917	5,000	(1,083)	59,915	51,000	8,915
7000.82 Membership Communications Exp		1,000	(1,000)	-	11,000	(11,000)
7000.84 Ballot Access Petitioning Exp		-	-	115,662	200,000	(84,338)
7000.88 Campaign Candidate Support Exp	3,000	5,000	(2,000)	34,868	20,000	14,868
7000.90 Historic Preservation Expense	400	200	200	4,125	2,200	1,925
Total 7000.80 Core Services Expense	7,317	11,200	(3,883)	214,570	284,200	(69,630)
Total 7-7000 Fundraising Membership Prog Exp	24,501	41,200	(16,699)	478,138	624,200	(146,062)
7-7200 Convention & Special Event Expe			-	-	-	-
7200.10 Convention Expenses General		-	-	438,211	137,000	301,211
7200.20 Convention Travel & Meals Exp		-	-	3,773	116,000	(112,227)
7200.30 Convention Fundraising Expense		-	-	-	50,000	(50,000)
7200.40 Special Event Expense			-	2,492	-	2,492
Total 7-7200 Convention & Special Event Expe	-	-	-	444,476	303,000	141,476
8000 Salary & Related Expense			-	-	-	-
8005 Salary Hourly Bonus Sick & Vac	21,724	41,000	(19,276)	283,865	482,000	(198,135)
8015 Contractor Admin & Internships		-	-	-	500	(500)
8020 Employer Cont to P/R Tax	2,236	2,500	(264)	24,528	27,500	(2,972)
8030 Employer Cont to 401K & Adm	458	650	(192)	7,264	7,150	114
8040 Fed & State Unemployment		150	(150)	1,574	1,650	(76)
8050 Fed & State Rev & Admn Tax	50		50	50	-	50
8060 Health Insurance	2,501	3,000	(499)	25,915	33,000	(7,085)
8065 Workers Comp Insurance	571	250	321	761	2,750	(1,989)
8070 Other Bens, Gdwill & Training		100	(100)	81	1,100	(1,019)
8080 Payroll Service Fees	2,261	1,200	1,061	23,189	13,200	9,989
Total 8000 Salary & Related Expense	29,802	48,850	(19,049)	367,227	568,850	(201,623)

Libertarian National Committee Inc
Statement of Activities: Actuals vs Budget
January - November, 2024

	Nov 2024			Total		
	Actual	Budget	over Budget	Actual	Budget	over Budget
Expenses						
8100 Admin & Overhead Expense			-	-	-	-
8110 Ofc Supplies & Non Cap Equipt	98	160	(62)	1,123	1,760	(637)
8120 Telephone & Data Services	433	650	(217)	6,104	7,150	(1,046)
8125 Equipment Leases & Maint.		65	(65)	-	715	(715)
8130 Postage & Shipping	2,764	1,000	1,764	30,085	11,000	19,085
8140 Travel, Meeting, & Meals Exp	500	1,000	(501)	11,188	24,700	(13,512)
8160 Insurance - D/O Cyber - Other	14,314	1,500	12,814	27,542	16,500	11,042
8170 Occupancy Expenses			-	-	-	-
8170-20 Utilities Expense	142	420	(278)	2,904	4,580	(1,676)
8170-30 Property Taxes, Fees & Permits	5,683	-	5,683	18,987	5,000	13,987
8170-40 Maintenance, Cleaning & Repairs	85	420	(335)	2,084	4,580	(2,496)
8170-50 Property / GL Insurance		250	(250)	962	2,750	(1,788)
8170-60 Assc Fees, Rent & Storage	210	240	(30)	2,310	2,360	(50)
Total 8170 Occupancy Expenses	6,119	1,330	4,789	27,248	19,270	7,978
8180 Printing & Copying		200	(200)	5	2,200	(2,195)
8190 Software, Hardware & Other IT	4,015	5,000	(985)	67,259	75,000	(7,741)
8195 Other Expenses & Bank Fees	1,487	380	1,107	6,496	3,620	2,876
Total 8100 Admin & Overhead Expense	29,729	11,285	18,444	177,050	161,915	15,135
8200 Professional Services			-	-	-	-
8210 Legal			-	-	-	-
8210-10 Legal - General	11,556	5,000	6,556	77,868	55,000	22,868
Total 8210 Legal	11,556	5,000	6,556	77,868	55,000	22,868
8220 Accounting	10,146	6,500	3,646	79,636	71,500	8,136
8230 FEC Filing & Consulting	2,000	2,500	(500)	22,000	27,500	(5,500)
8240 Computer Services		1,000	(1,000)	-	18,500	(18,500)
8250 Other Professional Services	1,545	250	1,295	9,907	2,750	7,157
Total 8200 Professional Services	25,246	15,250	9,996	189,410	175,250	14,160
8300 Depreciation Expense	1,846	2,000	(154)	20,305	22,000	(1,695)
Total Expenses	111,124	118,585	(7,461)	1,676,606	1,855,215	(178,609)
Net Operating Income	(47,597)	8,615	(56,212)	15,988	(1,015)	17,003
Other Income						
4920 In-Kind Income			-	410	-	410
Total Other Income	-	-	-	410	-	410
Other Expenses						
8920 In-Kind Expense			-	410	-	410
Total Other Expenses	-	-	-	410	-	410
Net Other Income	-	-	-	-	-	-
Net Income	(47,597)	8,615	(56,212)	15,988	(1,015)	17,003

Balance Sheet
As of November 30, 2024

	Total			
	As of Nov 30, 2024	As of Oct 31, 2024 (PP)	Change	% Change
ASSETS				
Current Assets				
Bank Accounts				
11 Cash	-	-	-	
111U PNC Checking 8115 (Unrest)	19,467	23,343	(3,876)	-16.60%
112U Truist xxx8394 (Unrestricted)	121,804	109,247	12,557	11.49%
114R Truist xxx8408 (Rest Building)	1,730	1,730	-	0.00%
119R Truist xxx0094 JFA (Restricted)	45,252	205,204	(159,952)	-77.95%
Total 11 Cash	188,253	339,525	(151,272)	-44.55%
11.1 Investments				
110I PNC Bond Money Market	25,936	25,868	68	0.26%
Total 11.1 Investments	25,936	25,868	68	0.26%
Total Bank Accounts	214,189	365,393	(151,204)	-41.38%
Accounts Receivable				
12 Accounts Receivable	51,611	51,611	-	0.00%
Total Accounts Receivable	51,611	51,611	-	0.00%
Other Current Assets				
1501 Undeposited Funds - Zoho / Checks	3,847	25,864	(22,016)	-85.12%
16 Prepaid Expenses	-	-	-	
164 Prepaid Services	12,942	10,509	2,433	23.15%
166 Prepaid Insurance	-	14,280	(14,280)	-100.00%
167 Prepaid Convention - Spec Event	40,000	40,000	-	0.00%
Total 16 Prepaid Expenses	52,942	64,789	(11,847)	-18.29%
Total Other Current Assets	56,790	90,653	(33,863)	-37.35%
Total Current Assets	322,590	507,657	(185,067)	-36.46%
Fixed Assets				
17 Fixed Assets				
172 Furniture & Fixtures	25,879	25,879	-	0.00%
173 Office Equipment	16,797	16,797	-	0.00%
174 Computer Hardware	36,449	36,449	-	0.00%
175 Computer Software	134,614	134,614	-	0.00%
177 Office Building	-	-	-	
177-10 Physical Structure	477,119	477,119	-	0.00%
177-20 Land	347,881	347,881	-	0.00%
Total 177 Office Building	825,000	825,000	-	0.00%
178 Ofc Imprmnt Acq & Capt Expense	70,519	70,519	-	0.00%
179 Accumulated Depreciation	(372,155)	(370,310)	(1,846)	-0.50%
Total 17 Fixed Assets	737,102	738,948	(1,846)	-0.25%
Total Fixed Assets	737,102	738,948	(1,846)	-0.25%
TOTAL ASSETS	1,059,692	1,246,605	(186,913)	-14.99%

Libertarian National Committee Inc
Balance Sheet
As of November 30, 2024

	Total			
	As of Nov 30, 2024	As of Oct 31, 2024 (PP)	Change	% Change
LIABILITIES AND EQUITY				
Liabilities				
Current Liabilities				
Accounts Payable				
21 Accounts Payable	38,667	44,309	(5,642)	-12.73%
Total Accounts Payable	38,667	44,309	(5,642)	-12.73%
Credit Cards				
22 Credit Cards				
2223 PNC Bus Options Visa	42,352	37,649	4,703	12.49%
2225 BB&T Visa	48,278	40,882	7,396	18.09%
Total 22 Credit Cards	90,630	78,532	12,098	15.41%
Total Credit Cards	90,630	78,532	12,098	15.41%
Other Current Liabilities				
24 Accrued Expenses				
241 Accrued Payroll	11,275	11,275	-	0.00%
242 Accrued Vacation	8,104	8,508	(405)	-4.76%
245 Accrued Real Estate Tax	10,099	9,322	777	8.33%
Total 24 Accrued Expenses	29,477	29,105	372	1.28%
25 Accrued Payroll Taxes				
251 Payroll Tax Liabilities	8	8	-	0.00%
Total 25 Accrued Payroll Taxes	8	8	-	0.00%
26 Accrued Organizational Taxes				
264 Sales Tax Liability				
264-1 Sales Tax Liability - CA	66	66	-	0.00%
264-3 Sales Tax Liability - PA	13	13	-	0.00%
264-4 Sales Tax Liability - TX	14	14	-	0.00%
264-5 Sales Tax Liability - VA	5	8	(3)	-33.37%
Total 264 Sales Tax Liability	98	101	(3)	-2.71%
Total 26 Accrued Organizational Taxes	98	101	(3)	-2.71%
27 Deferred Liabilities				
276 Joint Affiliate Portion of Rev	1,864	2,308	(444)	-19.23%
277 JFA Liability	19,786	165,484	(145,698)	-88.04%
Total 27 Deferred Liabilities	21,650	167,791	(146,141)	-87.10%
Total Other Current Liabilities	51,234	197,006	(145,772)	-73.99%
Total Current Liabilities	180,530	319,846	(139,316)	-43.56%
Total Liabilities	180,530	319,846	(139,316)	-43.56%
Equity				
31 General Operating	861,442	861,442	-	0.00%
32 Temp. Restricted Balances				
3204 Fund - Campus	1,730	1,730	-	0.00%
Total 32 Temp. Restricted Balances	1,730	1,730	-	0.00%
Net Income	15,988	63,586	(47,597)	-74.86%
Total Equity	879,161	926,758	(47,597)	-5.14%
TOTAL LIABILITIES AND EQUITY	1,059,692	1,246,605	(186,913)	-14.99%

Libertarian National Committee Inc Statement of Cash Flows

January - November, 2024

	Jan 2024	Feb 2024	Mar 2024	Apr 2024	May 2024	Jun 2024	Jul 2024	Aug 2024	Sep 2024	Oct 2024	Nov 2024	Total
OPERATING ACTIVITIES												
Net income	(22,035)	(42,840)	(33,608)	6,163	141,773	(121,758)	(32,232)	78,286	38,213	51,626	(47,597)	15,988
Adjustments to reconcile Net Income to Net Cash provided by operations:												
12 Accounts Receivable			-				(8,820)	(42,790)				(51,611)
1501 Undeposited Funds - Zoho / Checks	34,278	(6,833)	(22,917)	14,103	24,543	(17,119)	6,499	1,002	(2,388)	(19,462)	22,016	33,723
164 Prepaid Expenses:Prepaid Services	(1,950)	1,609	(4,286)	(48)	(504)	(504)	2,305	2,080	(9,826)	833	(2,433)	(12,724)
166 Prepaid Expenses:Prepaid Insurance		2,931	2,932		(4,403)	(9,121)			(756)		14,280	5,863
167 Prepaid Expenses:Prepaid Convention - Spec Event									(40,000)			(40,000)
167-10 Prepaid Expenses:Prepaid Convention - Spec Event:Prepaid Convention General Exp				(50,000)	51,105							1,105
21 Accounts Payable	(6,896)	76	1,249	(6,560)	(2,625)	2,534	3,130	177,039	(102,926)	(38,308)	(5,642)	21,071
2223 Credit Cards:PNC Bus Options Visa	132	1,629	(713)	4,166	36,265	(36,818)	2,038	16,701	8,946	5,303	4,703	42,352
2225 Credit Cards:BB&T Visa	(563)	6	21	8,862	(8,968)	10,937	11,148	7,129	5,168	5,469	7,396	46,605
241 Accrued Expenses:Accrued Payroll	2,916	(107)	(11,467)	(2,878)	2,059	2,982	2,213	(8,852)	1,106	3,319		(8,708)
242 Accrued Expenses:Accrued Vacation	1,271	(5,875)	2,039	(4,539)		1,333	(53)	364	236	(405)	(5,629)	(39,500)
244 Accrued Expenses:Other Accrued Expenses			(18,500)		269,000				(290,000)			8,545
245 Accrued Expenses:Accrued Real Estate Tax	777	777	777	777	777	777	777	777	777	777	777	8
251 Accrued Payroll Taxes:Payroll Tax Liabilities								8				
264-1 Accrued Organizational Taxes:Sales Tax Liability:Sales Tax Liability - CA	26	4	22	11	42	10	(182)	19	34	5		(11)
264-3 Accrued Organizational Taxes:Sales Tax Liability:Sales Tax Liability - PA	(20)	8	16	(18)	11	7	3	9	7	(35)		(14)
264-4 Accrued Organizational Taxes:Sales Tax Liability:Sales Tax Liability - TX	(71)	19	12	(20)	23	-	(3)	5	27	(49)		(57)
264-5 Accrued Organizational Taxes:Sales Tax Liability:Sales Tax Liability - VA	4	4	1	0	1	(2)	(3)	-	9	(6)	(3)	5
272-20 Deferred Liabilities:Deferred Convention Revenue:Deferred Convention Fundraising	18,411	15,973	38,224	67,360	(231,725)							(91,756)
276 Deferred Liabilities:Joint Affiliate Portion of Rev	(148)	136	5,146	(5,005)	518	242	296	(292)	(67)	(308)	(444)	77
277 Deferred Liabilities:JFA Liability	(1,418)							341,424	138,262	(312,785)	(145,698)	19,786
Total Adjustments to reconcile Net Income to Net Cash provided by operations:	46,748	10,357	(7,444)	26,211	136,118	(46,075)	20,732	494,207	(291,262)	(355,009)	(105,453)	(70,868)
Net cash provided by operating activities	24,713	(32,484)	(41,051)	32,374	277,891	(167,834)	(11,501)	572,493	(253,049)	(303,384)	(153,050)	(54,880)
INVESTING ACTIVITIES												
179 Fixed Assets:Accumulated Depreciation	1,846	1,846	1,846	1,846	1,846	1,846	1,846	1,846	1,846	1,846	1,846	20,305
Net cash provided by investing activities	1,846	1,846	1,846	1,846	1,846	1,846	1,846	1,846	1,846	1,846	1,846	20,305
FINANCING ACTIVITIES												
31 General Operating								(5,000)				(5,000)
Net cash provided by financing activities	-	-	-	-	-	-	-	(5,000)	-	-	-	(5,000)
Net cash increase for period	26,559	(30,638)	(39,206)	34,220	279,737	(165,988)	(9,655)	569,339	(251,203)	(301,538)	(151,204)	(39,575)

RELATED PARTY TRANSACTIONS AS OF: 12/17/2024

Related Party Donations	BSM Expires	Date of Last Contribution	Amount	YTD Contributions	Lifetime Giving (Since 1990)
Paul Darr	06/22/25	10/10/24	\$ 10.59	\$ 176.72	\$ 527.64
Paul Bracco	Life Member	12/01/24	\$ 5.00	\$ 110.00	\$ 1,713.00
Keith Thompson	Life Member	04/30/24	\$ 0.52	\$ 0.52	\$ 1,350.00
Ben Wier	05/10/25	05/09/24	\$ 26.05	\$ 78.15	\$ 203.15
Mark Ruthorford	Life Member	08/24/24	\$ 51.75	\$ 154.75	\$ 9,758.00
Travis Bost	Life Member	11/20/24	\$ 43.76	\$ 666.82	\$ 2,942.42
Robert Vinson	12/16/25	12/17/24	\$ 26.03	\$ 26.03	\$ 50.00
Otto Dassing	12/02/24	12/01/23	\$ 25.00	\$ -	\$ 650.00
Roman Garcia	Life Member	11/25/24	\$ 100.00	\$ 1,780.55	\$ 5,389.55
Andrew Chadderdon	Life Member	11/26/24	\$ 5.15	\$ 211.40	\$ 1,975.30
Nick Shawhan	03/01/25	02/29/24	\$ 125.00	\$ 250.00	\$ 625.00
Jonathan McGee	Life Member	08/24/24	\$ 51.75	\$ 154.75	\$ 1,654.75
Patrick Ford	08/03/25	08/02/24	\$ 25.00	\$ 25.00	\$ 550.00
Matt Johnson	Life Member	10/01/24	\$ 125.00	\$ 1,301.75	\$ 3,701.75
Adam Haman	06/19/25	08/22/24	\$ 51.75	\$ 394.27	\$ 663.47
Caryn Ann Harlos	Life Member	05/27/24	\$ 25.75	\$ 823.25	\$ 5,828.93
Meredith Hays	05/08/25	05/07/24	\$ 26.05	\$ 26.05	\$ 158.15
Gregory Hertzsch	Life Member	12/01/24	\$ 10.00	\$ 120.00	\$ 5,275.00
Adrian Malagon	Life Member	12/01/24	\$ 5.15	\$ 61.80	\$ 1,855.80
Angela McArdle	07/08/25	12/01/24	\$ 5.00	\$ 657.30	\$ 1,952.30
Dustin Nanna	06/02/25	06/03/24	\$ 25.00	\$ 25.00	\$ 1,358.00
Steven Nekhaila	Life Member	09/11/24	\$ 1,000.00	\$ 1,575.00	\$ 4,345.00
William Redpath	Life Member	08/23/24	\$ 51.75	\$ 96.39	\$ 108,157.39
Andrew Watkins	Life Member	11/10/24	\$ 25.00	\$ 776.75	\$ 1,101.75
Katherine Yeniscavich	Life Member	12/14/24	\$ 10.30	\$ 523.60	\$ 2,697.10
Gary Alvstad	Life Member	03/29/24	\$ 315.18	\$ 315.18	\$ 4,717.03
David Benner III	03/30/25	03/30/24	\$ 25.00	\$ 25.00	\$ 812.00
Dustin Blankenship	12/01/24	04/02/24	\$ 235.13	\$ 388.13	\$ 1,557.49
Richard Bowen	LPF Member	02/01/24	\$ 21.00	\$ 82.00	\$ 3,311.00
Richard Burke	09/20/24	10/31/23	\$ 25.00	\$ -	\$ 1,381.15
Todd Hagopian	Life Member	07/08/24	\$ 50.00	\$ 611.25	\$ 8,056.36
Robley Hall	09/01/23	07/31/24	\$ 5.00	\$ 40.00	\$ 634.00
William Hyman	04/13/23	01/31/24	\$ 5.15	\$ 5.15	\$ 908.80
Michael Rufo	09/09/24	07/02/24	\$ 154.50	\$ 1,131.50	\$ 3,733.50
Marcos Tuniewicz	Life Member	05/23/24	\$ 209.00	\$ 418.00	\$ 5,189.58
Beth Vest	Life Member	07/11/24	\$ 10.30	\$ 72.10	\$ 3,181.40
Total Contributions (Curr Board):			\$ 1,856.35	\$ 10,015.85	\$ 164,483.45

Related Party Disbursements	Memo	Current Month Disbursement	YTD Disbursements
Free Libertarian Party New Mexico	State Membership Transfer	\$	\$ -
LPAK - LP Alaska	State Membership Transfer	\$ 123.71	\$ 1,097.43
LPCA - LP California	State Membership Transfer	\$ 310.62	\$ 1,580.14
LPOH - LP Ohio	Ballot Access	\$	\$ 10,000.00
LPME - LP ME	Ballot Access	\$	\$ -
LPNM - LP New Mexico	State Membership Transfer	\$ 9.40	\$ 119.77
LP - North Dakota	Membership	\$	\$ 7,000.00
LPVA - LP Virginia	State Membership Transfer	\$	\$ -
Total Disbursements:		\$ 443.73	\$ 19,797.34

CHAIR'S DISCRETIONARY DISBURSEMENTS FOR 2024

Chair	Memo	MTD	YTD
Angela McArdle			