



MARCH 2025 END OF MONTH FINANCIAL REPORTS

Page 2 – EOM Sustaining Membership and Revenue Charts and Graphs

Page 4 – EOM Financial Summary Reports

Page 6 – Statement of Activities – Actual to Budget

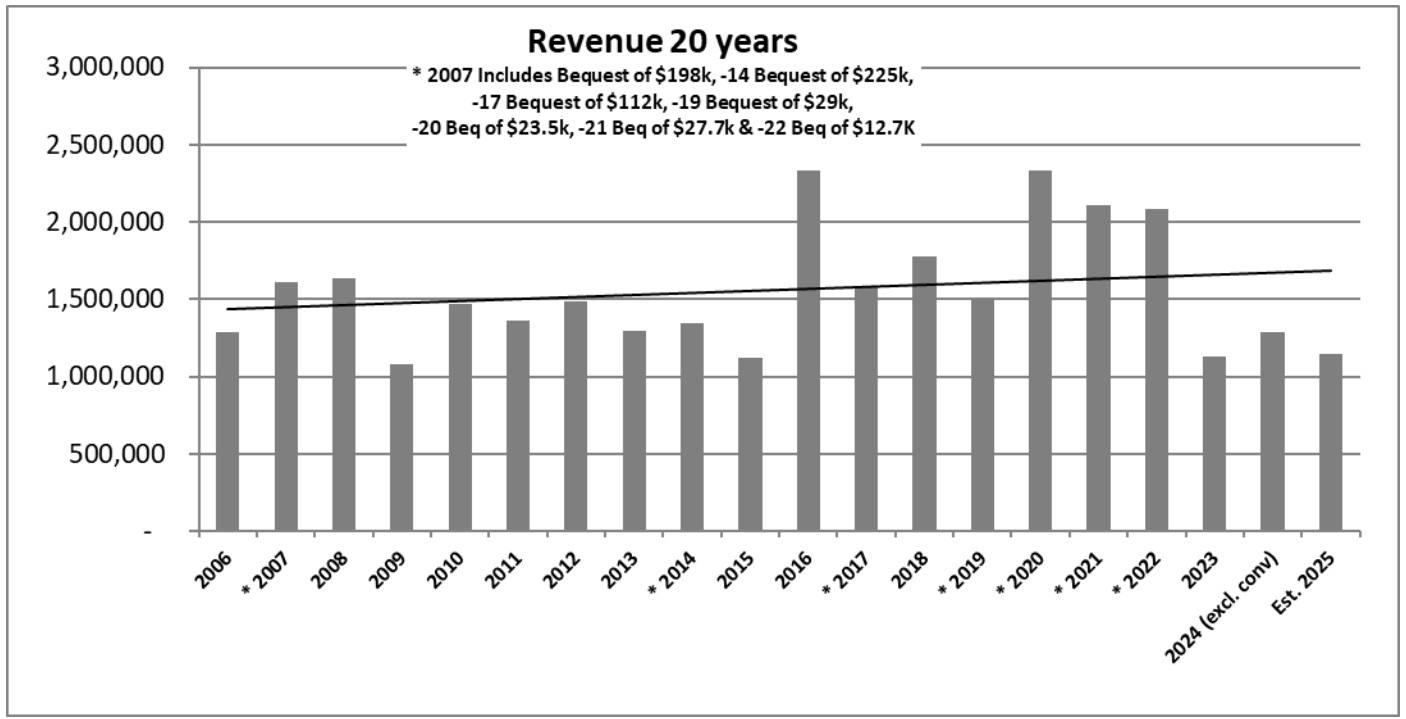
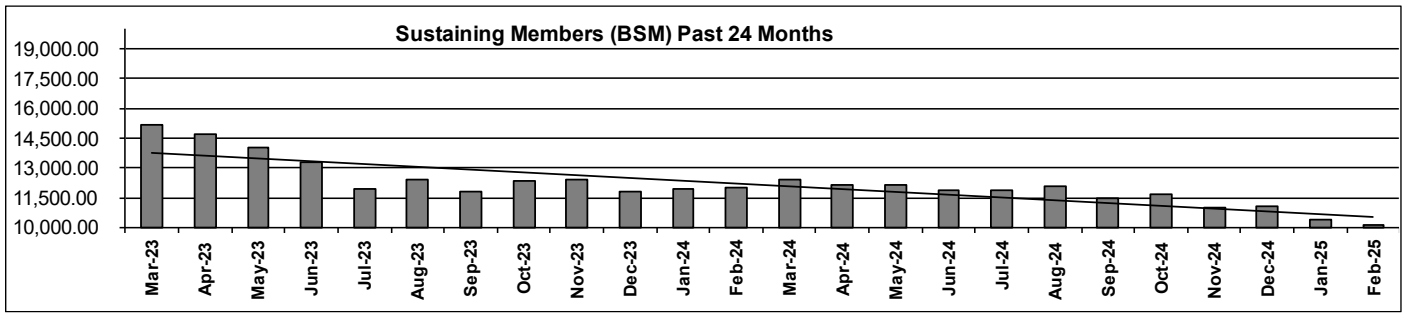
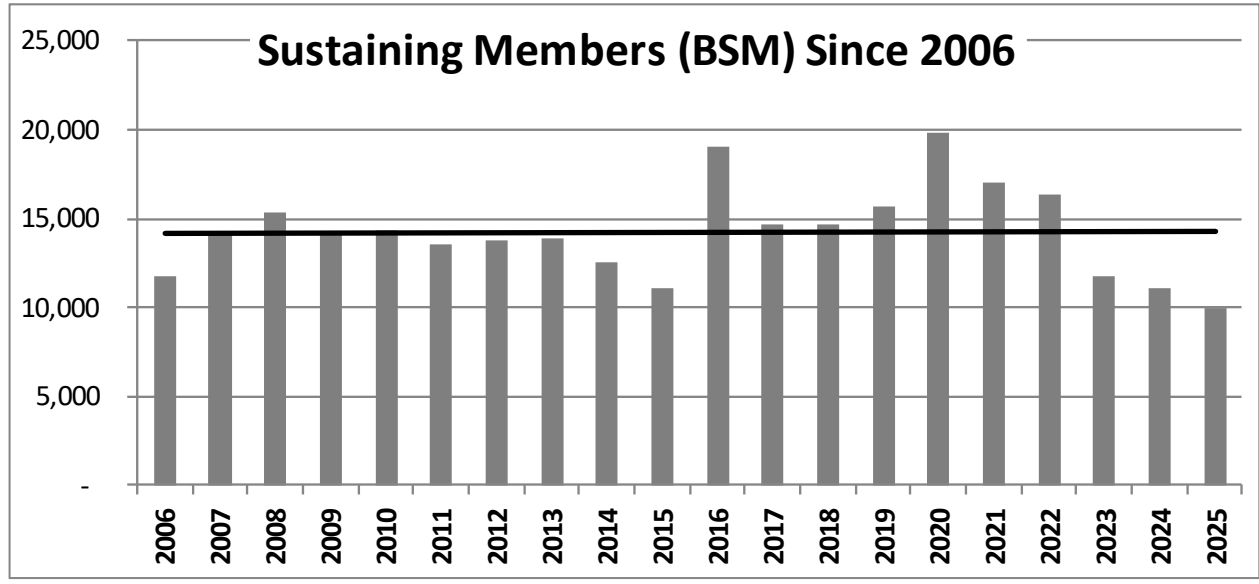
Page 9 – Statement of Financial Position Curr v. Prior Month Comparison

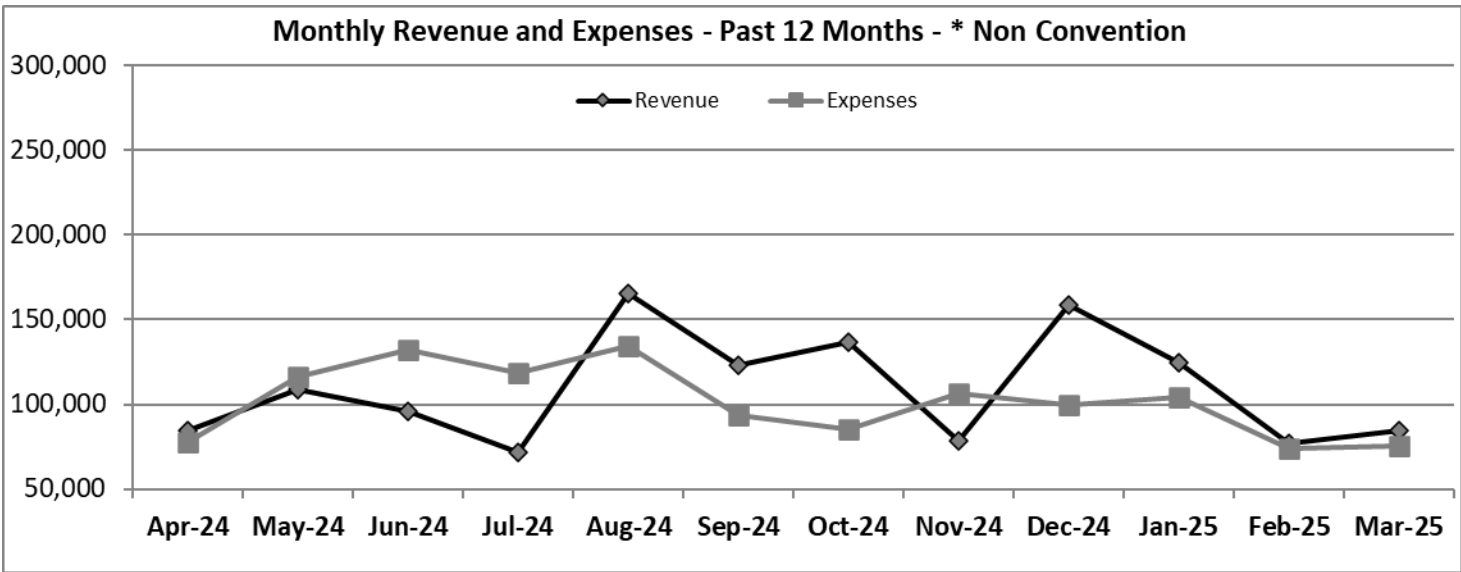
Page 11 – Statement of Cash Flows

Page 12 – Related Party Transactions – *Updated through 3/14/2025*

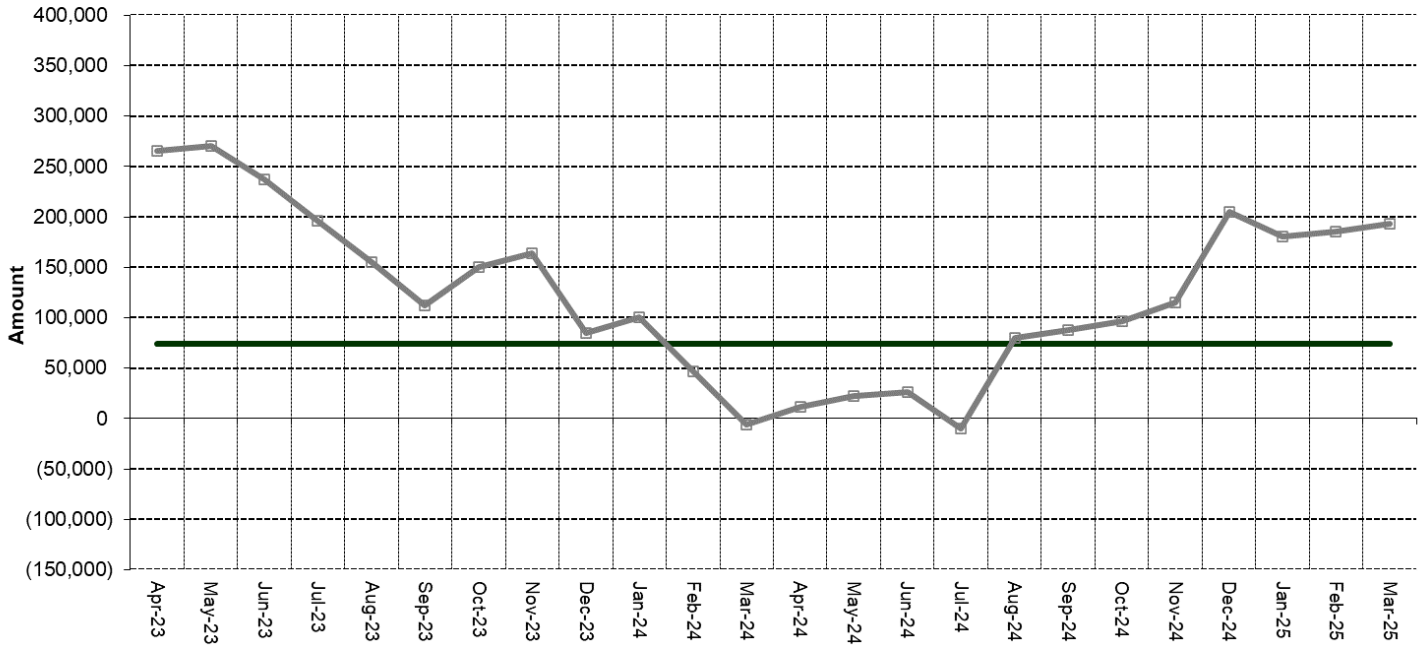
Page 12 – Chair’s Discretionary Disbursements

End of Month Reports – Charts





Reserve Adequacy Trend (24 Months)
 2025 Monthly Resv Target = \$74,120 - Curr Month Resv = \$193,069 *excludes TK JFA



		JAN	FEB	MAR
	Total Cash	\$ 249,193	\$ 244,723	\$ 223,560
Minus	Temporary Restricted	\$ 1,730	\$ 1,730	\$ 1,730
Minus	Total Deferred Liabilities	\$ 1,667	\$ 419	\$ 375
Minus	Accounts Payable	\$ 11,607	\$ 4,594	\$ 4,490
Minus	Credit Card Balance	\$ 85,072	\$ 81,619	\$ 61,975
Minus	Accrued Expenses & Liabilities	\$ 38,499	\$ 39,504	\$ 41,541
Plus	Prepaid Expenses	\$ 61,891	\$ 60,224	\$ 71,401
Plus	Accrued Vacation	\$ 8,052	\$ 8,227	\$ 8,218
	Total Cash Reserve Adequacy	\$ 180,560	\$ 185,308	\$ 193,069

End of Month Reports – Financial Summary

Revenue - by Function as % of Total

2019 thru 2025 (Not Including Convention Packages)

	2019	2020	2021	2022	2023	2024	2025
Membership Revenue	622,486	879,035	700,830	618,573	369,390	259,349	28,826
% Total Non Conv Revenue	41%	42%	33%	36%	33%	20%	10%
General Fundraising	648,038	843,565	1,050,462	969,607	733,173	721,702	147,661
% Total Non Conv Revenue	43%	40%	50%	57%	65%	56%	52%
Project/Program/Other	230,807	363,056	357,632	120,567	28,887	304,959	109,522
% Total Non Conv Revenue	15%	17%	17%	7%	3%	24%	38%
Total Non Convention Revenue	1,501,331	2,085,656	2,108,924	1,708,747	1,131,450	1,286,009	286,009

P&L Acct Summary Last Month Plus YTD

January through December 2025

	Jan-25	Feb-25	Mar-25	TOTAL
Revenue				
4-4000 · Fundraising Membership Prog Rev	64,553	52,537	59,937	177,027
4-4100 · Restricted Project Revenue			212	212
4-4200 · Convention & Special Event Rev				0
4200 - 49999 · Events, Program, Other				0
4700 Other Receipts	65	55	0	120
4800 Misc Income	57,485	24,286	24,159	105,930
Services				0
Credit Card Rewards	2,542		178	2,720
Total Revenue	124,645	76,878	84,486	286,009
Expense				
7-7000 · Fundraising Membership Prog Exp	5,961	4,673	7,961	18,596
7000 General Fundraising Expense	330	975	95	1,400
7300 Program Related Expenses	3,000	3,000	3,000	9,000
8000 · Salary & Related Expense	61,912	41,725	37,928	141,565
8100 · Admin & Overhead Expense	7,590	7,275	10,153	25,018
8200 · Professional Services	23,541	14,135	14,586	52,262
8300 · Depreciation Expense	1,846	1,846	1,846	5,538
Total Expense	104,180	73,629	75,569	253,378
Net Operating Income	20,465	3,248	8,917	32,631
Released from Restriction				0
Net Income	20,465	3,248	8,917	32,631

Libertarian National Committee Inc

Balance Sheet Summary

As of March 31, 2025

	TOTAL
ASSETS	
Current Assets	
Bank Accounts	409,207.09
Accounts Receivable	0.00
Other Current Assets	79,245.65
Total Current Assets	\$488,452.74
Fixed Assets	729,718.07
Other Assets	0.00
TOTAL ASSETS	\$1,218,170.81
LIABILITIES AND EQUITY	
Liabilities	
Current Liabilities	
Accounts Payable	7,391.75
Credit Cards	61,975.24
Other Current Liabilities	224,661.02
Total Current Liabilities	\$294,028.01
Long-Term Liabilities	0.00
Total Liabilities	\$294,028.01
Equity	924,142.80
TOTAL LIABILITIES AND EQUITY	\$1,218,170.81

Libertarian National Committee Inc

Budget vs. Actuals

January - March, 2025

	Mar 2025			Total		
	Actual	Budget	over Budget	Actual	Budget	over Budget
Income						
4-4000 Fundraising Membership Prog Rev			-	-	-	-
4000-10 General Fundraising	16,318	30,000	(13,682)	16,675	90,000	(73,325)
4000-20 Other Membership	20,474	15,000	5,474	28,826	45,000	(16,174)
4000-30 Recurring Membership	22,860	25,000	(2,140)	130,878	75,000	55,878
4000-40 Ballot Access - Voter Reg Rev	82	2,500	(2,418)	108	7,500	(7,392)
4000-50 Campaign Candidate Support Rev	177	2,500	(2,323)	513	7,500	(6,987)
4000-60 Affiliate Support Revenue	22		22	22	-	22
4000-70 Historic Preservation Revenue	5		5	5	-	5
Total 4-4000 Fundraising Membership Prog Rev	59,937	75,000	(15,063)	177,027	225,000	(47,973)
4-4100 Restricted Project Revenue			-	-	-	-
4100.10 Building Fund Revenue	131		131	131	-	131
4100.20 Legal Fund Revenue	81		81	81	-	81
Total 4-4100 Restricted Project Revenue	212	-	212	212	-	212
4700 Other Receipts			-	-	-	-
4710 Interest & Dividends	0		0	120	-	120
Total 4700 Other Receipts	0	-	0	120	-	120
4800 Misc Income			-	-	-	-
4820 JFA Commissions	24,159	30,000	(5,841)	105,930	120,000	(14,070)
Total 4800 Misc Income	24,159	30,000	(5,841)	105,930	120,000	(14,070)
Credit Card Rewards	178		178	2,720	-	2,720
Total Income	84,486	105,000	(20,514)	286,009	345,000	(58,991)
Gross Profit	84,486	105,000	(20,514)	286,009	345,000	(58,991)

Libertarian National Committee Inc

Budget vs. Actuals

January - March, 2025

	Mar 2025			Total		
	Actual	Budget	over Budget	Actual	Budget	over Budget
Expenses						
7-7000 Fundraising Membership Prog Exp			-	-	-	-
7000-10 General Fundraising Expenses		5,000	(5,000)	100	16,000	(15,900)
7000-20 Other Membership Expense	1,624		1,624	3,643	-	3,643
7000-30 Recurring Membership Expenses	833	2,500	(1,667)	2,500	7,500	(5,000)
7000-60 Credit Card Fees Expense	3,396		3,396	8,009	-	8,009
7000-70 Store Expenses	668	2,000	(1,332)	1,292	6,000	(4,708)
7000-80 Core Services Expense			-	-	-	-
7000-81 Outreach & Activism Expense	1,040	2,000	(960)	1,481	18,000	(16,519)
7000-90 Historic Preservation Expense	400	400	-	1,570	1,200	370
Total 7000-80 Core Services Expense	1,440	2,400	(960)	3,051	19,200	(16,149)
Total 7-7000 Fundraising Membership Prog Exp	7,961	11,900	(3,939)	18,596	48,700	(30,104)
7000 General Fundraising Expense			-	-	-	-
7040 Tele Fundraising Expense	95		95	1,070	-	1,070
7095 Credit Card Prc Fees			-	330	-	330
Total 7000 General Fundraising Expense	95	-	95	1,400	-	1,400
7300 Program-Related Expenses			-	-	-	-
7360 Campaign Support & Initiatives			-	-	-	-
7360-40 Campaign/Candidate Support	3,000		3,000	9,000	-	9,000
Total 7360 Campaign Support & Initiatives	3,000	-	3,000	9,000	-	9,000
Total 7300 Program-Related Expenses	3,000	-	3,000	9,000	-	9,000
8000 Salary & Related Expense			-	-	-	-
8005 Salary Hourly Bonus Sick & Vac	22,559	26,000	(3,441)	83,995	78,000	5,995
8015 Contractor Admin & Internships	8,555	9,700	(1,145)	33,447	29,100	4,347
8020 Employer Cont to P/R Tax	2,001	2,000	1	7,990	6,000	1,990
8030 Employer Cont to 401K & Adm	500	500	(0)	1,707	1,500	207
8040 Fed & State Unemployment		150	(150)	-	450	(450)
8060 Health Insurance	2,501	2,600	(99)	7,503	7,800	(297)
8065 Workers Comp Insurance		150	(150)	-	450	(450)
8070 Other Bens, Gdwill & Training	50	50	-	50	150	(100)
8080 Payroll Service Fees	1,658	1,700	(42)	6,769	5,100	1,669
8090 Employee Search	104		104	104	-	104
Total 8000 Salary & Related Expense	37,928	42,850	(4,922)	141,565	128,550	13,015

Libertarian National Committee Inc

Budget vs. Actuals

January - March, 2025

	Mar 2025			Total		
	Actual	Budget	over Budget	Actual	Budget	over Budget
Expenses						
8100 Admin & Overhead Expense			-	-	-	-
8110 Ofc Supplies & Non Cap Equipt	30	75	(45)	30	225	(195)
8120 Telephone & Data Services	439	440	(1)	1,312	1,320	(8)
8130 Postage & Shipping	1,081	800	281	3,396	2,400	996
8160 Insurance - D/O Cyber - Other	-	-	-	571	-	571
8170 Occupancy Expenses			-	-	-	-
8170-20 Utilities Expense	263	300	(37)	971	900	71
8170-30 Property Taxes, Fees & Permits	777	-	777	2,380	-	2,380
8170-40 Maintenance, Cleaning & Repairs	720	45	675	805	135	670
8170-60 Assc Fees, Rent & Storage	214	210	4	642	630	12
Total 8170 Occupancy Expenses	1,974	555	1,419	4,798	1,665	3,133
8190 Software, Hardware & Other IT	5,153	2,500	2,653	10,170	7,500	2,670
8195 Other Expenses & Bank Fees	1,441	850	591	4,702	2,550	2,152
8198 Melio services fee	35		35	38	-	38
Total 8100 Admin & Overhead Expense	10,153	5,220	4,933	25,018	15,660	9,358
8200 Professional Services			-	-	-	-
8210 Legal			-	-	-	-
8210-10 Legal - General	4,500	4,500	-	24,155	13,500	10,655
Total 8210 Legal	4,500	4,500	-	24,155	13,500	10,655
8220 Accounting	3,836	3,000	836	17,843	10,500	7,343
8230 FEC Filing & Consulting	2,000	2,000	-	6,000	6,000	-
8240 Computer Services		3,000	(3,000)	-	9,000	(9,000)
8250 Other Professional Services	4,250	100	4,150	4,250	300	3,950
8270 Payment Processing Fee			-	14	-	14
Total 8200 Professional Services	14,586	12,600	1,986	52,262	39,300	12,962
8300 Depreciation Expense	1,846	2,000	(154)	5,538	6,000	(462)
Total Expenses	75,569	74,570	999	253,378	238,210	15,168
Net Operating Income	8,917	30,430	(21,513)	32,631	106,790	(74,159)
Net Income	8,917	30,430	(21,513)	32,631	106,790	(74,159)

Libertarian National Committee Inc
Balance Sheet
As of March 31, 2025

	Total		Change	% Change
	As of Mar 31, 2025	As of Feb 28, 2025 (PP)		
ASSETS				
Current Assets				
Bank Accounts				
11 Cash	-	-	-	
111U PNC Checking 8115 (Unrest)	39,067	41,810	(2,743)	-6.56%
112U Truist xxx8394 (Unrestricted)	182,697	201,172	(18,475)	-9.18%
113R PNC Check 2497 (Restricted)	10	10	-	0.00%
114R Truist xxx8408 (Rest Building)	1,730	1,730	-	0.00%
119R Truist xxx0094 JFA (Restricted)	185,647	32,137	153,510	477.67%
Total 11 Cash	409,152	276,860	132,292	47.78%
11.1 Investments			-	
110I PNC Bond Money Market	55	55	0	0.25%
Total 11.1 Investments	55	55	0	0.25%
Total Bank Accounts	409,207	276,915	132,292	47.77%
Other Current Assets				
1501 Undeposited Funds - Zoho / Checks	7,845	4,787	3,058	63.88%
16 Prepaid Expenses	-	-	-	
164 Prepaid Services	31,401	20,224	11,177	55.26%
167 Prepaid Convention - Spec Event	40,000	40,000	-	0.00%
Total 16 Prepaid Expenses	71,401	60,224	11,177	18.56%
Total Other Current Assets	79,246	65,011	14,235	21.90%
Total Current Assets	488,453	341,926	146,527	42.85%
Fixed Assets				
17 Fixed Assets			-	
172 Furniture & Fixtures	25,879	25,879	-	0.00%
173 Office Equipment	16,797	16,797	-	0.00%
174 Computer Hardware	36,449	36,449	-	0.00%
175 Computer Software	134,614	134,614	-	0.00%
177 Office Building	-	-	-	
177-10 Physical Structure	477,119	477,119	-	0.00%
177-20 Land	347,881	347,881	-	0.00%
Total 177 Office Building	825,000	825,000	-	0.00%
178 Ofc Imprmnt Acq & Capt Expense	70,519	70,519	-	0.00%
179 Accumulated Depreciation	(379,539)	(377,693)	(1,846)	-0.49%
Total 17 Fixed Assets	729,718	731,564	(1,846)	-0.25%
Total Fixed Assets	729,718	731,564	(1,846)	-0.25%
TOTAL ASSETS	1,218,171	1,073,490	144,681	13.48%

Libertarian National Committee Inc
Balance Sheet
As of March 31, 2025

	Total		Change	% Change
	As of Mar 31, 2025	As of Feb 28, 2025 (PP)		
LIABILITIES AND EQUITY				
Liabilities				
Current Liabilities				
Accounts Payable				
21 Accounts Payable	7,392	19,458	(12,067)	-62.01%
Total Accounts Payable	7,392	19,458	(12,067)	-62.01%
Credit Cards				
22 Credit Cards				
2223 PNC Bus Options Visa	27,189	24,866	2,323	9.34%
2225 BB&T Visa	34,786	56,753	(21,967)	-38.71%
Total 22 Credit Cards	61,975	81,619	(19,644)	-24.07%
Total Credit Cards	61,975	81,619	(19,644)	-24.07%
Other Current Liabilities				
24 Accrued Expenses				
241 Accrued Payroll	8,238	7,062	1,177	16.67%
242 Accrued Vacation	8,218	8,227	(9)	-0.11%
244 Other Accrued Expenses	21,000	21,000	-	0.00%
245 Accrued Real Estate Tax	3,673	2,897	777	26.82%
Total 24 Accrued Expenses	41,130	39,185	1,945	4.96%
25 Accrued Payroll Taxes				
251 Payroll Tax Liabilities	311	219	93	42.38%
Total 25 Accrued Payroll Taxes	311	219	93	42.38%
26 Accrued Organizational Taxes				
264 Sales Tax Liability				
264-1 Sales Tax Liability - CA	66	66	-	0.00%
264-3 Sales Tax Liability - PA	13	13	-	0.00%
264-4 Sales Tax Liability - TX	14	14	-	0.00%
264-5 Sales Tax Liability - VA	8	8	-	0.00%
Total 264 Sales Tax Liability	100	100	-	0.00%
Total 26 Accrued Organizational Taxes	100	100	-	0.00%
27 Deferred Liabilities				
276 Joint Affiliate Portion of Rev	375	419	(44)	-10.49%
277 JFA Liability	182,744	17,264	165,481	958.54%
Total 27 Deferred Liabilities	183,119	17,683	165,437	935.58%
Total Other Current Liabilities	224,661	57,187	167,474	292.85%
Total Current Liabilities	294,028	158,264	135,764	85.78%
Total Liabilities	294,028	158,264	135,764	85.78%
Equity				
31 General Operating	889,782	889,782	-	0.00%
32 Temp. Restricted Balances				
3204 Fund - Campus	1,730	1,730	-	0.00%
Total 32 Temp. Restricted Balances	1,730	1,730	-	0.00%
Net Income	32,631	23,714	8,917	37.60%
Total Equity	924,143	915,226	8,917	0.97%
TOTAL LIABILITIES AND EQUITY	1,218,171	1,073,490	144,681	13.48%

Libertarian National Committee Inc

Statement of Cash Flows

January - March, 2025

	JAN 2025	FEB 2025	MAR 2025	TOTAL
▼ OPERATING ACTIVITIES				
Net Income	20,465.31	3,248.43	8,916.91	\$32,630.65
▼ Adjustments to reconcile Net Income to Net Cash ...				\$0.00
1501 Undeposited Funds - Zoho / Checks	8,630.82	479.02	-3,057.80	\$6,052.04
164 Prepaid Expenses:Prepaid Services	-10,000.00	1,666.66	-11,176.72	\$ -19,510.06
21 Accounts Payable	24,773.89	-67,476.20	-12,066.60	\$ -54,768.91
2223 Credit Cards:PNC Bus Options Visa	-6,117.65	-7,217.69	2,323.19	\$ -11,012.15
2225 Credit Cards:BB&T Visa	589.04	3,764.50	-21,967.07	\$ -17,613.53
241 Accrued Expenses:Accrued Payroll	3,742.15	0.00	1,176.92	\$4,919.07
242 Accrued Expenses:Accrued Vacation	81.35	175.00	-8.85	\$247.50
245 Accrued Expenses:Accrued Real Estate Tax	776.81	776.81	776.81	\$2,330.43
251 Accrued Payroll Taxes:Payroll Tax Liabilities	167.48	51.08	92.62	\$311.18
264-5 Accrued Organizational Taxes:Sales Tax Li...		2.09		\$2.09
276 Deferred Liabilities:Joint Affiliate Portion of ...	-170.88	-1,248.46	-43.94	\$ -1,463.28
277 Deferred Liabilities:JFA Liability	58,363.84	-202,813.03	165,480.65	\$21,031.46
Total Adjustments to reconcile Net Income to Ne...	80,836.85	-271,840.22	121,529.21	\$ -69,474.16
Net cash provided by operating activities	\$101,302.16	\$ -268,591.79	\$130,446.12	\$ -36,843.51
▼ INVESTING ACTIVITIES				
179 Fixed Assets:Accumulated Depreciation	1,845.89	1,845.89	1,845.89	\$5,537.67
Net cash provided by investing activities	\$1,845.89	\$1,845.89	\$1,845.89	\$5,537.67
NET CASH INCREASE FOR PERIOD	\$103,148.05	\$ -266,745.90	\$132,292.01	\$ -31,305.84

RELATED PARTY TRANSACTIONS AS OF: 4/30/2025

Related Party Donations	BSM Expires	Date of Last Contribution	Amount	YTD Contributions	Lifetime Giving (Since 1990)
Paul Darr	04/01/26	03/31/25	\$ 103.20	\$ 316.40	\$ 527.64
Paul Bracco	Life Member	02/01/25	\$ 5.00	\$ 26.30	\$ 1,713.00
Keith Thompson	Life Member	03/31/25	\$ 6.00	\$ 135.23	\$ 1,350.00
Ben Wier	03/16/26	03/15/25	\$ 26.05	\$ 26.05	\$ 203.15
Travis Bost	Life Member	04/21/25	\$ 51.75	\$ 173.29	\$ 2,942.42
Robert Vinson	12/16/25	12/17/24	\$ 26.03	\$ -	\$ 50.00
Aron Lam	02/02/26	02/01/25	\$ 51.75	\$ 51.75	\$ 339.00
Matt Johnson	Life Member	03/10/25	\$ 514.80	\$ 514.80	\$ 3,701.75
Otto Dassing	02/01/26	01/31/25	\$ 25.00	\$ 25.00	\$ 650.00
Andrew Chadderdon	Life Member	01/26/25	\$ 5.15	\$ 5.15	\$ 1,975.30
Jonathan McGee	Life Member	04/05/25	\$ 103.20	\$ 1,132.50	\$ 1,654.75
Jessi Cowart	03/09/26	04/06/25	\$ 10.59	\$ 319.17	\$ 243.33
Patrick Ford	08/03/25	08/02/24	\$ 25.00	\$ -	\$ 550.00
Caryn Ann Harlos	Life Member	05/27/24	\$ 25.75	\$ -	\$ 5,828.93
Meredith Hays	04/30/26	04/29/25	\$ 26.03	\$ 26.03	\$ 158.15
Gregory Hertzsch	Life Member	04/01/25	\$ 10.00	\$ 40.00	\$ 5,275.00
Trendalyn Hallesy	03/10/26	03/09/25	\$ 51.75	\$ 51.75	\$ 192.10
Adrian Malagon	Life Member	04/01/25	\$ 5.15	\$ 520.60	\$ 1,855.80
Dustin Nanna	06/02/25	06/03/24	\$ 25.00	\$ -	\$ 1,358.00
Steven Nekhaila	Life Member	03/28/25	\$ 26.03	\$ 1,026.03	\$ 4,345.00
William Redpath	Life Member	02/04/25	\$ 85.00	\$ 85.00	\$ 108,157.39
Andrew Watkins	Life Member	11/10/24	\$ 25.00	\$ -	\$ 1,101.75
Katherine Yeniscavich	Life Member	04/14/25	\$ 10.30	\$ 41.20	\$ 2,697.10
Roman Garcia	Life Member	12/25/24	\$ 100.00		\$ 5,389.55
Angela McArdle	07/08/25	12/01/24	\$ 5.00		\$ 1,952.30
Nick Shawhan	03/01/25	02/29/24	\$ 125.00		\$ 625.00
Adam Haman	06/19/25	08/22/24	\$ 51.75		\$ 663.47
Total Contributions (Curr Board):			\$ 1,243.53	\$ 4,516.25	\$ 146,869.56

Related Party Disbursements	Memo	Current Month Disbursement	YTD Disbursements
Free Libertarian Party New Mexico	State Membership Transfer		
LPAK - LP Alaska	State Membership Transfer	\$ 40.00	\$ 120.00
LPCA - LP California	State Membership Transfer	\$ 175.00	\$ 1,450.00
LPOH - LP Ohio	Ballot Access		
LPME - LP ME	Ballot Access		
LPNM - LP New Mexico	State Membership Transfer	\$ 5.00	\$ 14.70
LP - North Dakota	Membership		
LPVA - LP Virginia	State Membership Transfer	\$ 32.08	\$ 86.72
Total Disbursements:		\$ 252.08	\$ 1,671.42

CHAIR'S DISCRETIONARY DISBURSEMENTS FOR 2025

Chair	Memo	MTD	YTD